

RIG SPECIFICATION SHEET

SD-1500

Agapito Associates, Inc.

Mining & Civil Engineers & Geologists

Agapito Associates, Inc. (AAI) has the specialized personnel and equipment required for underground and surface drilling for instrumentation installation, resource confirmation, and exploration. AAI's equipment is designed for work in confined spaces and can be easily transported and assembled in difficult to access locations. Our drilling equipment is powered by either diesel, electric, or pneumatic motors so we are able to select the appropriate motor for the available power source or to meet MSHA requirements in "gassy" mines. Our drill rigs are capable of drilling any angle from vertical up to vertical down.

SD-1500

The SD-1500 is a robust, compact diamond drill rig for simple or difficult access underground or surface drilling. The rig is either diesel- or electric-powered and can be set up on tracks or skids. The SD-1500 can be equipped with either taller surface or shorter underground masts and winches. AAI's experienced field crew has used the versatile SD-1500 to drill holes for geological and geotechnical coring, instrument installation, and in situ stress determination by overcoring in coal, hard rock, industrial mineral mines, stone mines, tunnels, and concrete dams.

Specifications

Rig Type: Diamond Drill

Mount: Skid or 5T Trailer

Depth Capacity:

- BQ – 1,000 ft
- NQ – 800 ft
- HQ – 400 ft

Rig & Feed Frame

- Maximum Weight: 1,300 lb plus hoses
- Dimensions (inches): 68L x 35W x 61H

Electric Hydraulic Unit

- Weight: 1,450 lb
- Dimensions (inches): 79L x 29W x 50H
- Motor: 50hp, 49 amps, 480 volt, 3 phase
- Hydraulic Oil: 30-gal Schaeffer 112B Ecoshield Biodegradable

Hydraulic Bean Pump

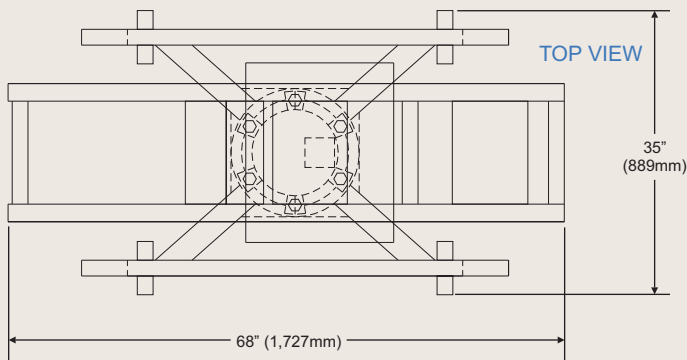
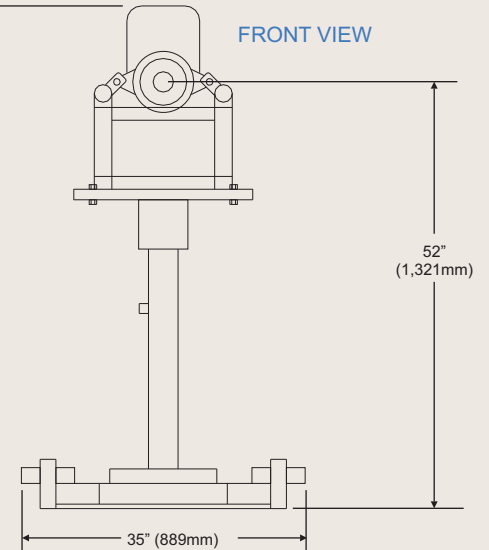
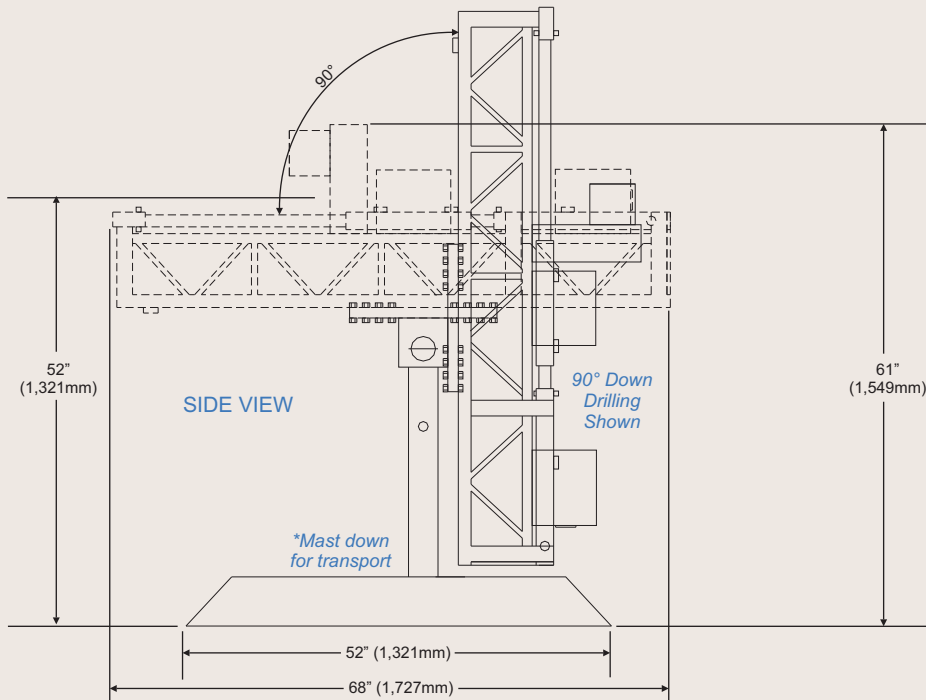
- Weight: 300 lb
- Dimensions (inches): 34L x 29W x 34H



For more information on our drilling capabilities with the SD-1500 rig, contact Agapito Associates, Inc.
+1.970.242.4220 or email info@agapito.com

RIG SPECIFICATION SHEET

SD-1500



Advantages

- Portable for difficult areas
- Low impact
- Compact for small openings
- Configurable for specific applications
- Wireline setup

